



PRIME MOVER CONTROLS INC.
VANCOUVER, BC, CANADA

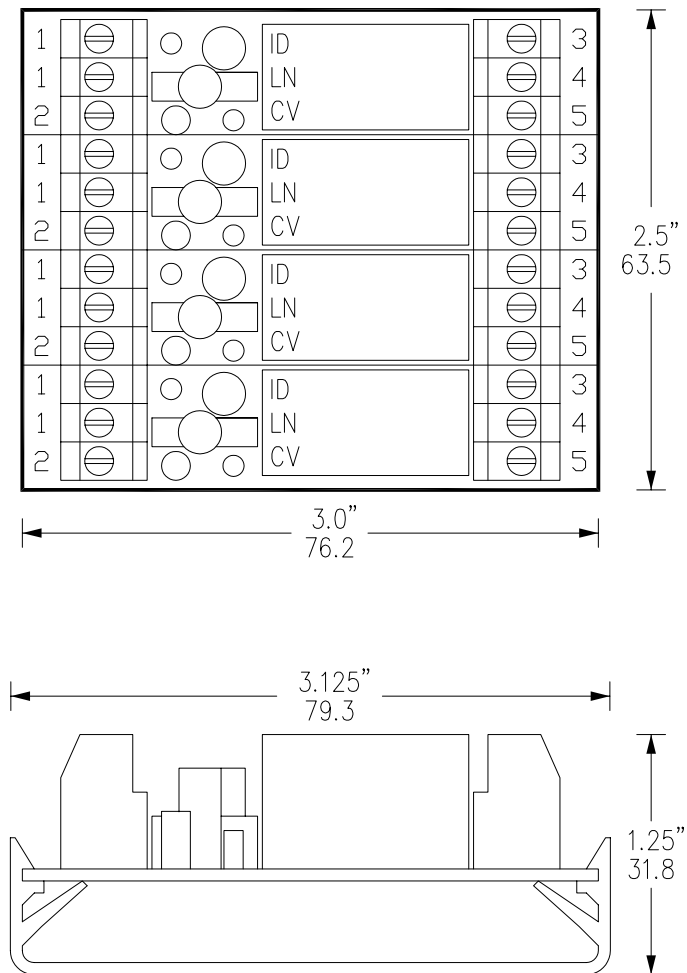
DATE 85NOV22
DWN R.P.D.
SCALE 1:1

QUAD SPDT RELAY
PC BOARD
INDICATING, TRACK MOUNTED

DWG No. A-8540-1031

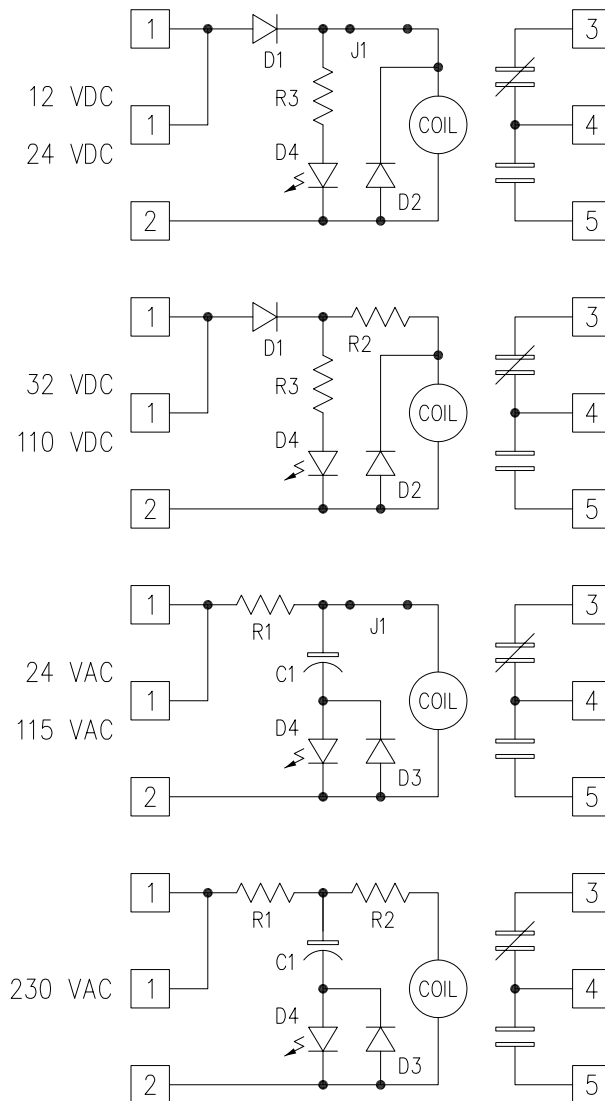
REV 1

DIMENSIONS



DIMENSIONS ARE IN INCHES AND MM.

SCHEMATIC



SPECIFICATIONS

CONTACT RATING (RESISTIVE LOAD) - AROMAT HA1E SERIES
 MAX. SWITCHING POWER - 500 VA, 90 W
 MAX. SWITCHING VOLTAGE - 250 VAC, 30 VDC
 MAX. SWITCHING CURRENT - 2A AC, 3A DC
 OPERATING POWER
 COIL - 0.9 VA, 0.36 WATTS; IND. LED - 5mA

PARTS LIST

D1,D2,D3 - 1N4005
 D4 - LED ESRB 3901 RED
 R1 - 100 OHM .25 W
 R2,R3 - AS NOTED BELOW
 TERMS - PHOENIX MKDS 3/3-5.08

ORDERING DATA

P/N 8540-1031-XXXX

1	-	12 VDC
2	-	24 VDC
3	-	32 VDC
4	-	110 VDC
5	-	24 VAC
6	-	115 VAC
7	-	230 VAC

RELAY 1 (TOP)
 RELAY 2
 RELAY 3
 RELAY 4 (BOT)

INSERT COIL VOLTAGE CODE FOR EACH RELAY

ITEM		COIL	R2 - J1	R3 - C1	INPUT TOTAL
V D C	12	12	J1	2K0 .25W	35 mA
	24	24	J1	4K7 .25W	20 mA
	32	24	560-.25W	6K2 .25W	20 mA
	110	48	8K2-3W	22K 1W	13 mA
	115	48	8K2-3W	22K 1W	13 mA
V A C	24	24	J1	.47u 100V	39 mA
	115	115	J1	.1u 250V	13 mA
	230	115	15K0-3W	.047u600V	10 mA