



Series 5040-1000

The Series 5040-1000 Remote Control Head is used with Series 8503-2000 Digital Servo Controllers in electric shaft systems. It can also be used with the Type 8550-2000 MPC-D or Type 8550-3200 MPC-CP systems and a Type 5500-5900 Remote Lever Driver.

Moving the control lever at one station causes all other levers in the system to follow. This provides continuous display of the commanding lever position at all stations. Because all control levers are continually aligned, control transfer between stations is smooth and "bumpless".

FEATURES

- Dual potentiometers for redundancy
- Dimmable internal illumination
- Control head IP66 above console surface
- Corrosion resistant
- Rugged construction
- "Unbreakable" transparent cover
- Many different detent and friction arrangements
- Easy to install
- Removable terminal blocks
- Marine Approvals

OPTIONS

- Custom scales
- Many lever and handle options
- Potentiometers for remote control, data logger, etc.
- Two wire transmitters
- Switches

ELECTRIC SHAFT REMOTE CONTROL HEAD

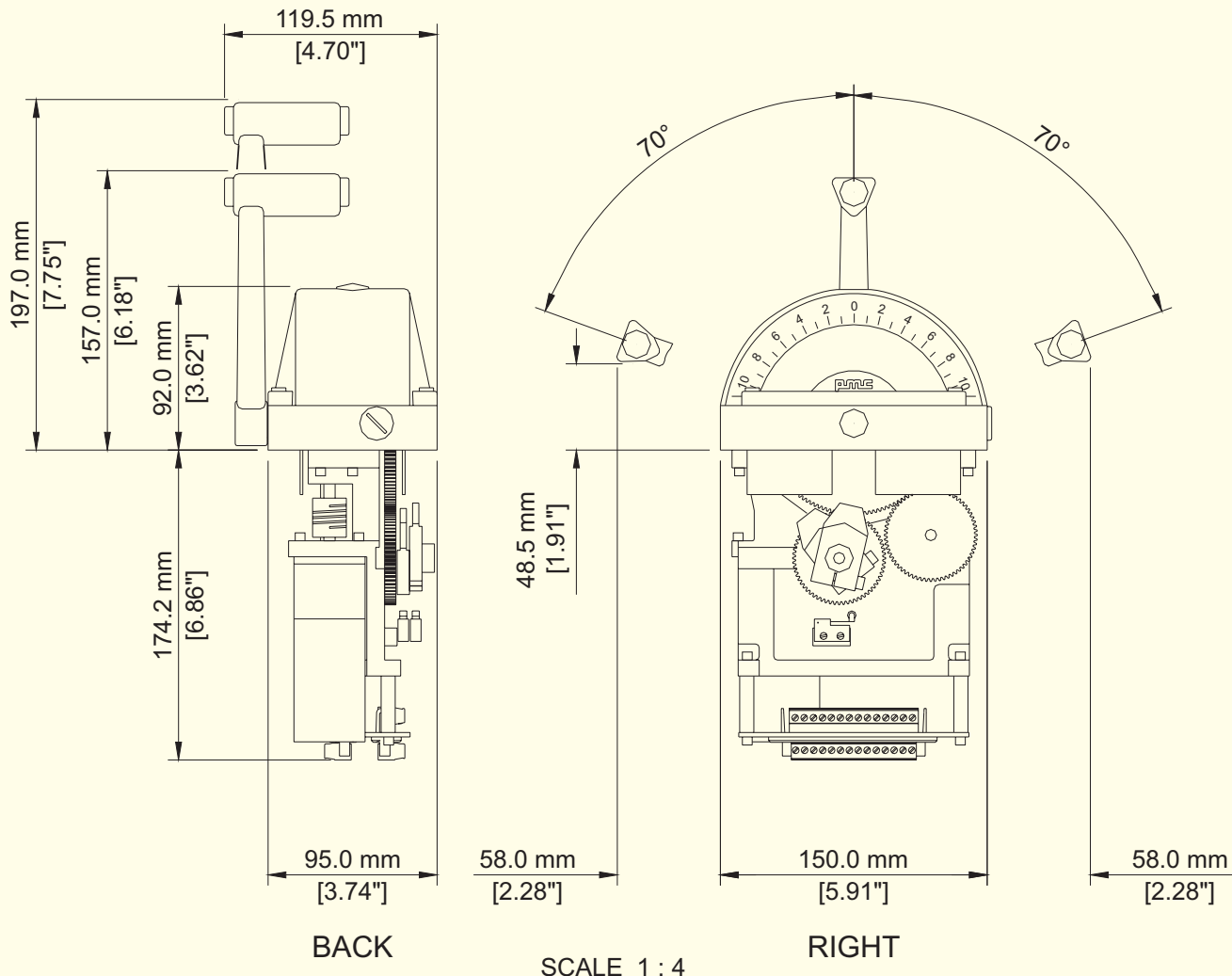
TYPE MCH-ES



PRIME MOVER CONTROLS INC.

SB 5040-1000

DIMENSIONS FOR 5040-1000 ELECTRIC SHAFT REMOTE CONTROL HEAD



SPECIFICATIONS:

Supply:

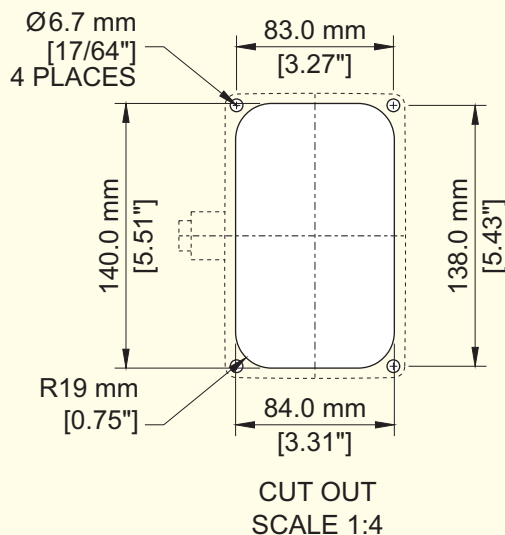
- Nominal 24 V_{DC}
- Nominal 290 mA, peak 550 mA

Environmental:

- Operating temperature -25 to +70°C
- Storage temperature -40 to +85°C
- Vibration: Frequency range 2 to 100 Hz
Peak to peak amplitude 2 mm below 13.2 Hz
Acceleration amplitude 0.7 g above 13.2 Hz
- CE compliant for EMC (IEC/EN60945)

Physical:

- IP66 above console
- Optional mounting from bottom
- Dimensions:
150 mm L × 119.5 mm W × 331.2 mm H
(5.9" L × 4.7" W × 13.0" H)
- Weight, typical 3.1 kg (8.2 lbs)
- Removable terminal blocks for 14 to 20 AWG wires



PRIME MOVER CONTROLS INC.

3600 GILMORE WAY, BURNABY BC CANADA V5G 4R8

TEL 604 433-4644 FAX 604 433-5570 www.pmc-controls.com