



## POWER TRANSFER UNIT

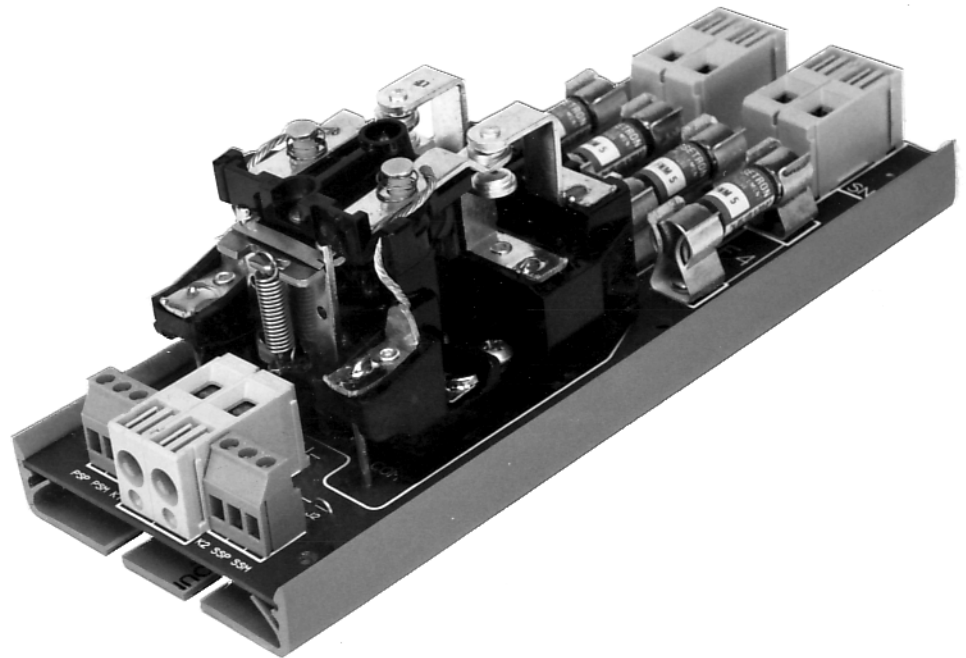
### Applications

- Navigation Light Control
- Pri/Sec Power Transfer
- AC/DC Power Control
- Lighting Control
- Motor Control

### Features

- Contacts have high power rating
- Wide range of AC or DC coil voltages
- Includes heavy duty power terminals and replaceable industrial fuses
- Easy installation using track mount provided or stand-offs
- Glass epoxy pc board is ultrasonically cleaned and conformal coated to withstand harsh environments.

### TYPE 8012-9001



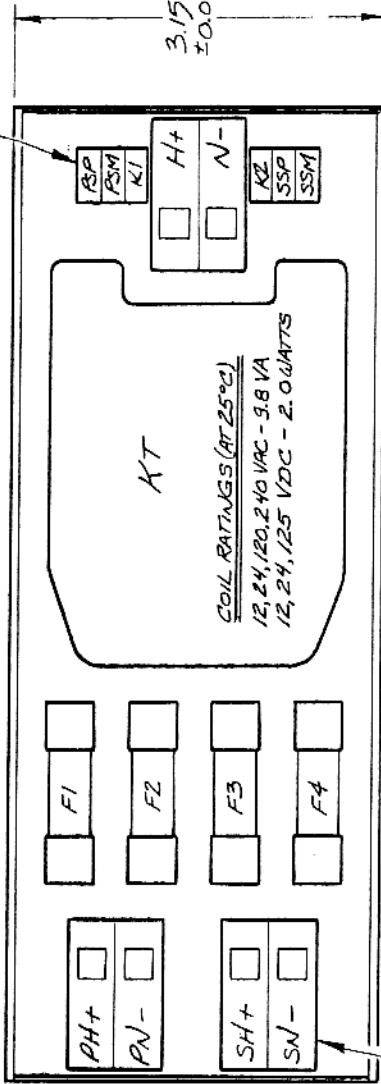
**PRIME MOVER CONTROLS INC.**

VANCOUVER, BC, CANADA

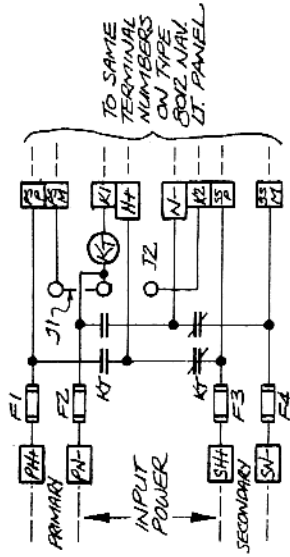
DESIGN, MANUFACTURE AND SERVICE OF MARINE AND  
INDUSTRIAL CONTROL COMPONENTS AND SYSTEMS

Electronic - Pneumatic - Hydraulic - Mechanical

TOP VIEW

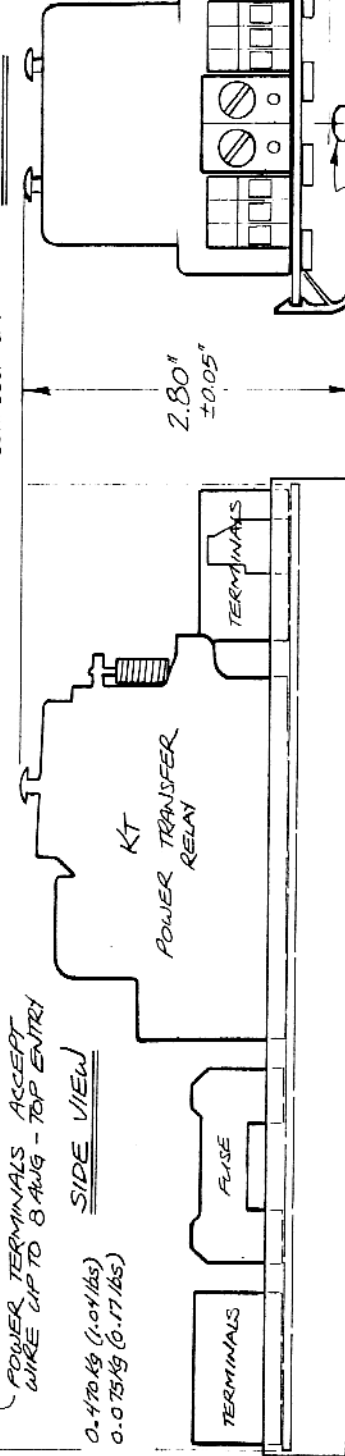


SCHEMATIC



END VIEW

PC BOARD NO. 8012-9001 Rev. 0



WEIGHTS:

PC BOARD ASSY - 0.470 kg (1.04 lbs)  
 MOUNTING TRACK - 0.075 kg (0.17 lbs)  
 OPERATING TEMP  
 DC: -55 TO +80 °C  
 AC: -55 TO +45 °C

SIDE VIEW

POWER TERMINALS ACCEPT WIRE UP TO 8 AWG - TOP ENTRY

MAXIMUM CONTACT RATINGS: 30 AMPS AT 240 VAC  
 20 AMPS AT 125 VDC

CUSTOMER INSTALLED UNITS ARE SHIPPED WITH AN 8" LENGTH OF MOUNTING TRACK - AS SHOWN

CAUTION: PRIMARY AND SECONDARY POWER INPUTS MUST BE IN PHASE - TO TEST FOR CORRECT PHASING, APPLY AC (DC-IF USED) VOLTMETER BETWEEN TERMINALS PH AND SH. METER SHOULD NOT READ SUPPLY VOLTAGE. THIS DRAWING SHALL NOT BE REPRODUCED OR USED FOR MANUFACTURE, PRODUCTION, OR PROCUREMENT WITHOUT THE EXPRESS WRITTEN PERMISSION OF PRIME MOVER CONTROLS INC.

TYPICAL MNTG. SCREW 10-32 PAN HEAD 3/4 FLAT WASHER

PRI. PWR. \_\_\_\_\_ SEC. PWR. \_\_\_\_\_  
 FUSES: VOLTS \_\_\_\_\_ AMPS \_\_\_\_\_ PH \_\_\_\_\_  
 RELAY: VOLTS \_\_\_\_\_ PH \_\_\_\_\_  
 REF. NO. \_\_\_\_\_ PROT. \_\_\_\_\_

DWN. R. DATE 06.9.10 REF. \_\_\_\_\_  
 APR. DATE \_\_\_\_\_ SCALE FULL

TYPE 8012 NAVI LT. CONTROL PANEL  
 AUTOMATIC POWER TRANSFER UNIT

REV	DATE	DESCRIPTION
2	11 APR 88	KT COIL TO PH-
3	10 NOV 88	ADD SPECIFICATIONS

**PRIME MOVER CONTROLS INC.**  
 VANCOUVER, BC, CANADA  
 DWG. No. SHEET  
**B-8012-9001**  
 ARRANGEMENT  
 DETAILS