



# IMACS 8540-1800 Series

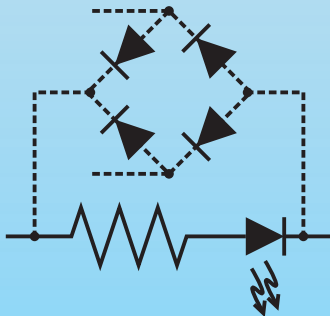
Digital input modules are used for sensing ON / OFF voltage levels. All input modules (except 8540-1855/1856) have filtering on the input of a hysteresis amplifier for high noise rejection and transient free "clean" switching.

The 8540-1856 module is a fast switching input module for signals produced by photoelectric switched or TTL level devices. The 8540-1855 is a DC only, input module design for data acquisition.

Each module provides up to 4000 V<sub>RMS</sub> of optical isolation between the field inputs and the output side of the circuit.

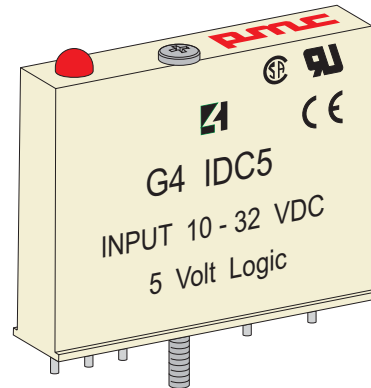
## FEATURES

- LED status indicator
- 4000 V<sub>RMS</sub> optical isolation
- -30 to 70°C operating temperature
- UL recognized
- CSA certified
- CE mark
- Passes NEMA showering arc test [ICS 2-230]
- Meets IEEE surge withstand specification [IEEE-472]



## DIGITAL INPUT MODULES

12 to 32 VAC / 10 to 32 VDC	8540-1850 G4	IDC5
35 to 60 VAC/DC	8540-1851 G4	IDC5G
90 to 140 VAC/DC	8540-1852 G4	IAC5
180 to 280 VAC/DC	8540-1853 G4	IAC5A
4 to 16 VDC	8540-1854 G4	IDC5B
2.5 to 28 VDC	8540-1855 G4	IDC5D
2.5 to 16 VDC	8540-1856 G4	IDC5K



## PRIME MOVER CONTROLS INC.

3600 GILMORE WAY, BURNABY B.C. CANADA V5G 4R8  
 TEL (604) 433-4644 FAX (604) 433-5570 email: info@pmc-controls.com