



Series 8545-2102

The series 8545-2102 Mini-Brick I/O module provides a marine grade platform for programmable logic control (PLC).

FEATURES

- 18 × Digital I/O
- 2 × Digital O/P
- 2 × RS485 ports
- Power supplies are electrically isolated for every comm port
- Tx/Rx lines are optically isolated for every comm port
- Transmission rates up to 115.2 kBd
- Tx/Rx LEDs for every comm port
- Watchdog LED
- Application specific diagnostic LED flashes error codes
- Removable terminal blocks
- TS 35×7,5 rail mount
- Designed and tested to meet or exceed marine regulations

APPLICATIONS

- Digital I/O for PMC IMACS
- Motor Control Center (MCC) interface from IMACS
- Control transfer logic for vessel station in command
- Custom PLC applications

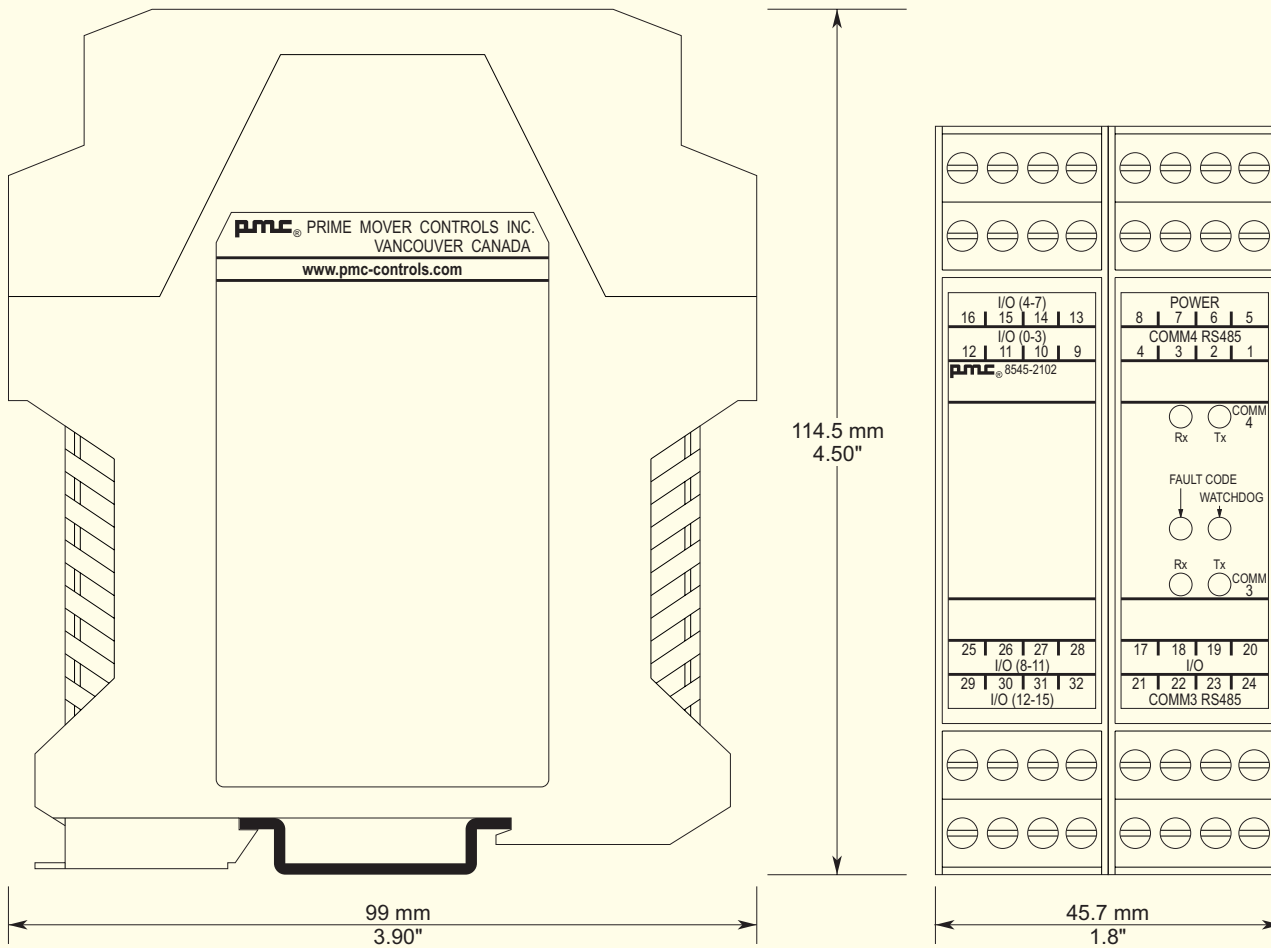
MINI BRICK, DIGITAL I/O MODULE

Programmable Multi-Function: Gateway / PLC / Brick



PRIME MOVER CONTROLS INC.

DIMENSIONS FOR 8545-2102 MINI BRICK, DIGITAL I/O MODULE



SCALE 1:1

SPECIFICATIONS:

Supply:

- Nominal 24 V_{DC}, range 8 to 35 V_{DC}
- 100 mA nominal, 125 mA max
- Reverse voltage protection

Environmental:

- Operating temperature -25 to +70°C
- Storage temperature -40 to +85°C
- Vibration: Frequency range 2-100 Hz
Peak to peak amplitude 2 mm below 13.2 Hz
Acceleration amplitude 0.7 G above 13.2 Hz
- CE compliant for EMC (IEC/EN60945)

Physical:

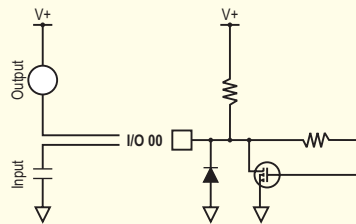
- IP20 Enclosure
- Dimensions:
99 mm L × 45.7 mm W × 114.5 mm H
(3.90" L × 1.80" W × 4.50" H)
- Weight, typical 0.24 kg (0.53 lbs)
- Removable terminal blocks for 14 to 20 AWG wires

Connection:

- 18 × Digital I/O
- 2 × Digital O/P
- 2 × Isolated RS485

Diagnostics:

- Watchdog LED
- Diagnostic LED flashes error codes



PRIME MOVER CONTROLS INC.

3600 GILMORE WAY, BURNABY BC CANADA V5G 4R8

TEL 604 433-6444 FAX 604 433-5570 www.pmc-controls.com