



# Type 8545-2104-406

The series 8545-2104 Mini-Brick I/O module provides a marine grade platform for programmable logic control (PLC).

### • FEATURES

- 18 × Digital I/O
- 2 × Digital O/P
- 2 × RS485 ports
- Power supplies are electrically isolated for every comm port
- Tx/Rx lines are optically isolated for every comm port
- Transmission rates up to 115.2 kbd
- Tx/Rx LEDs for every comm port
- Watchdog LED
- Application specific diagnostic LED flashes error codes
- Removable terminal blocks
- TS 35×7,5 rail mount
- Designed and tested to meet or exceed marine regulations

### APPLICATIONS

- Digital I/O for PMC IMACS
- Motor Control Center (MCC) interface from IMACS
- Control transfer logic for vessel station in command
- Custom PLC applications

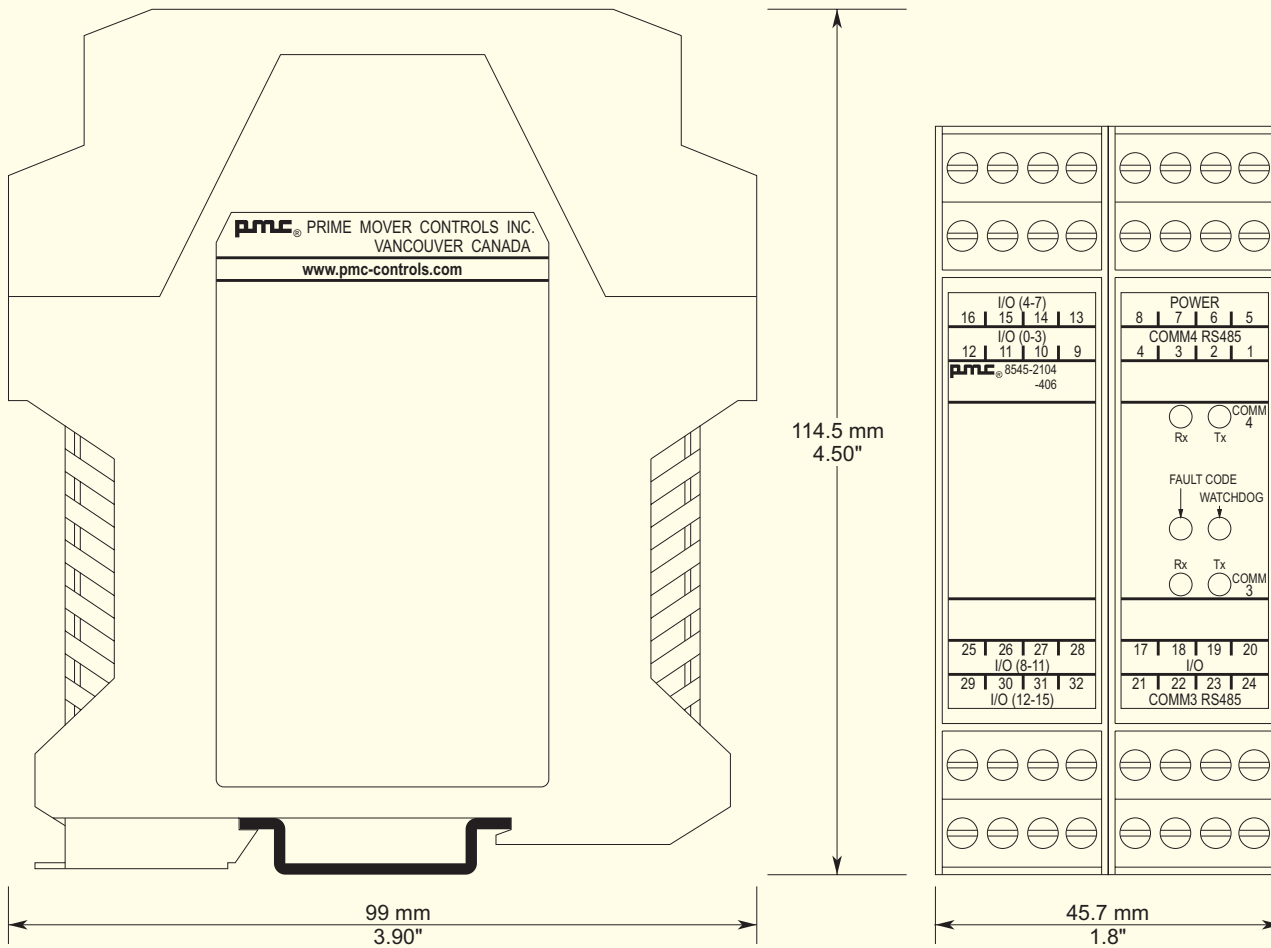
## MINI BRICK, DIGITAL I/O MODULE

NMEA to Indicator Decoder for 8202 Telegraph



**PRIME MOVER CONTROLS INC.**

## DIMENSIONS FOR 8545-2104-406 NMEA TO INDICATOR DECODER



SCALE 1:1

### SPECIFICATIONS:

#### Supply:

- Nominal 24 V<sub>DC</sub>, range 8 to 35 V<sub>DC</sub>
- 100 mA nominal, 125 mA max
- Reverse voltage protection
- Input power fuse, 4 A, type V/FA-4

#### Environmental:

- Operating temperature -25 to +70°C
- Storage temperature -40 to +85°C
- Vibration: Frequency range 2 to 100 Hz  
Peak to peak amplitude 2 mm below 13.2 Hz  
Acceleration amplitude 0.7 g above 13.2 Hz
- CE compliant for EMC (IEC/EN60945)

#### Physical:

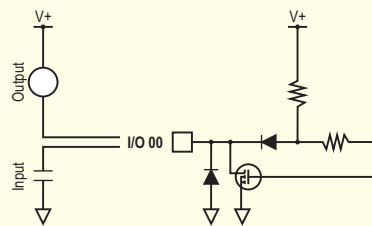
- IP20 Enclosure
- Dimensions:  
99 mm L × 45.7 mm W × 114.5 mm H  
(3.90" L × 1.80" W × 4.50" H)
- Weight, typical 0.24 kg (0.53 lbs)
- Removable terminal blocks for 14 to 20 AWG wires

### Connection:

- 18 × Digital I/O
- 2 × Digital O/P
- 2 × Isolated RS485

### Diagnostics:

- Watchdog LED
- Diagnostic LED flashes error codes



## PRIME MOVER CONTROLS INC.

3600 GILMORE WAY, BURNABY BC CANADA V5G 4R8