

MV Steilacoom II

65.8 m Double Ended Vehicle/Passenger Ferry

Two remote bridge control stations and two engine room control stations
Controls for vessels with controllable pitch propellers

MACHINERY SPECIFICATIONS:

- 2 x CAT 3508B main engines @ 1050 HP with ADEM III ECM
- 2 x ZF W4400 reduction gearboxes with solenoid activated clutch
- 2 x Hundested CP propellers with PVG-32 analog proportional valves

PMC SUPPLIED EQUIPMENT:

- MPC-CP Marine Propulsion Control System for vessels with controllable pitch propellers
- Automatic load control
- Direct communication link to engines
- MCH-ET Remote Control Heads
- Type 8010 Navigation Light Control Panel



MV Island Home

77.7 m Double Ended Vehicle/Passenger Ferry

Six remote bridge control stations and one engine room control station
Controls for vessels with fixed pitch propellers

MACHINERY SPECIFICATIONS:

- 2 x EMD 12-710G7B main engines 3000 HP @ 900 RPM
- 2 x Reintjes WAF 3445K reduction gearboxes

PMC SUPPLIED EQUIPMENT:

- MPC-D Marine Propulsion Control System with dynamic braking and power boost
- DCH Digital Control Head
- MCH-ET Remote Control Heads
- DCH Remote Displays
- Type 8118 Digital Tachometers

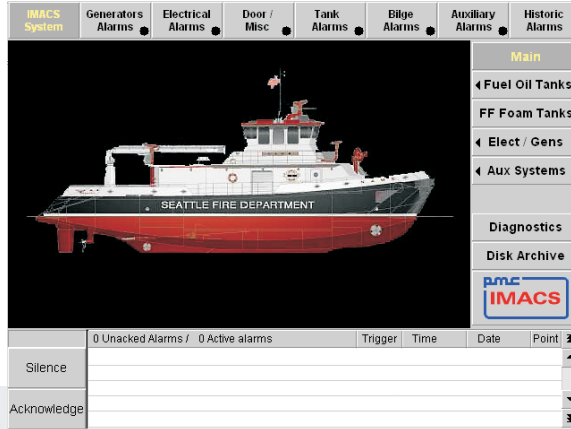


PRIME MOVER CONTROLS INC.

3600 GILMORE WAY, BURNABY B.C. CANADA V5G 4R8
TEL (604) 433-4644 FAX (604) 433-5570 www.pmc-controls.com

PMC IMACS

INTEGRATED MACHINERY, ALARM and CONTROL SYSTEM
Omni Chief Distributed Control and Monitoring Unit
Single Point Displays



Leschi

32.9 m CBRNE Large Platform Fireboat
Seattle Fire Department

PRIME MOVER CONTROLS INC.

3600 GILMORE WAY, BURNABY B.C. CANADA V5G 4R8
TEL (604) 433-4644 FAX (604) 433-5570 www.pmc-controls.com